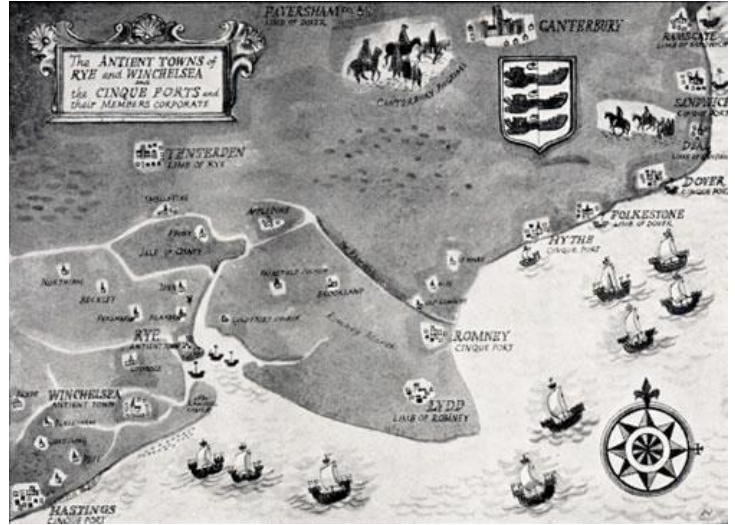




SE Main Event 2012

The Cinque Ports

Friday 18th – 20th May



The South East section invites you to East Sussex and Kent for the Main Event for 2012. The rally will be based at the superb Flackley Ash Hotel in Peasmarsh, near Rye, at which we have sole use for the weekend, and was last used by the section 5 years ago. This year we have also reverted to a weekend rally, by popular request of section members.

Enjoying the beautiful Kent countryside we will visit some superb locations and attractions along the routes, and enjoy fantastic views across the historic Romney Marsh.

To encourage both smaller and large cars to attend, there will be a choice of a short flat route, and a longer route (with a few hills) for those who want to have a bit more of a challenge.

As in previous years we will be offering different options (see below), and we look forward to seeing you in May.

Option A includes full rally pack, entrance to all attractions and reserved accommodation at Flackley Ash Hotel (please see booking form for hotel room rates)

Option B includes full rally pack, entrance to all attractions on rally and lunch on Saturday. Entrants are responsible for arranging their own accommodation

Option C includes the full rally pack, including all routes but pay on the day for attractions and lunch. Entrants are responsible for arranging their own accommodation

Option A: The cost of the rally is £75 per car including driver, one passenger, & VCC HQ rally levy⁺

Option B: The cost of the rally is £75 per car including driver, one passenger, & VCC HQ rally levy⁺

Option C: The cost of the rally is £35 per car including VCC HQ rally levy⁺

The cost for additional passengers for Options A and B is £30 per person

⁺ A fixed charge of £5 per car is levied to all entrants for VCC main events, which the section must pay to VCC HQ



The Cinque Ports SE Main Event 2012

Flackley Ash Hotel
Peasmarsh, East Sussex
Friday May 18th to Sunday May 20th

Option A: There are two options for accommodation: - both on a Dinner, Bed & Breakfast Rate

Superior Room: £200 per night (based on 2 people sharing)

Standard Double / Twin: £160 per night (based on 2 people sharing)

(A limited amount of single occupancy rooms are available with no single supplement)

All accommodation must be booked through the organiser, and all hotel costs are payable by entrants at the time of checking out. If you wish to book accommodation for extra nights at the hotel please contact the rally organiser (details below) for a special rate.

Options B & C: A special rate of £30 per person for the Saturday evening dinner has been arranged for non-hotel residents. Please contact the rally organiser if you would like to attend the dinner.

BOOKING FORM

Entrants Details

Name

Address

..... Post Code Telephone number.....

Mobile..... E-mail address.....

Name(s) of additional passengers/guests

.....

Option selected: *(please circle)* **A** **B** **C**

If Option A, please indicate the room type required: *(please tick below)*

Superior: Standard: Double Twin

Vehicle details:

Make Model

Number of cylinders Registration No. Year

I enclose a cheque payable for £ _____ to "VCC"

(Options A & B: £75 per car and two people + £30 each additional passenger or **Option C:** £35 per car)

Please send completed form with cheque to: Dan Lehmann, 16 Westbourne Place, HOVE,
East Sussex, BN3 4GN **E-mail:** dan@lehmann.me.uk **Telephone:** 01273 279580